



QUALITY... PLAIN & SIMPLE®

## Throttle Plate with Kickdown & Spring Return Kit for 4150 Style Carburetor Installation Instructions

### General Installation Notes:

Please read these instructions completely before beginning the installation. If you have any questions please call.

Before beginning the installation, disconnect the negative battery cable and use wheel chocks to block the vehicle's wheels.

Make sure the engine, transmission, body and frame are properly grounded. We recommend using anti-seize lubricant on all aluminum threads where threadlock compound is not applied during final assembly.

*This kit is designed to be used with a Lokar Throttle Cable and/or Kickdown Cable.*

Refer to Fig. 1 for the component names.

**Step 1:** Remove the 1/4"-20 thin nylock nut and the post washer from the spring stand assembly. Install the spring stand with the springs and throttle tab onto the top side of the throttle cable mounting bracket, into the slot at the front left corner. Install the post washer (beveled edge out) and 1/4"-20 thin nylock nut on the bottom. **Fig. 2**

**Step 2:** If you are going to be mounting a Throttle Cable onto the mounting bracket, assemble the throttle cable stand and cable stud, using the 3/8"-16 x 3/4" flat head bolt. **Fig. 3** The flat on the cable stud goes towards the rear. Make sure the cable stud is angled correctly so that the throttle cable inner wire will be aligned with its connection point on the carburetor.

If you are going to be mounting a Kickdown Cable onto the mounting bracket, assemble the kickdown cable stand and cable stud, using the 3/8"-16 x 3/4" flat head bolt. **Fig. 3** The flat on the cable stud goes towards the rear. Make sure the cable stud is angled correctly so that the kickdown cable inner wire will be aligned with its connection point on the carburetor.

**Step 3: Throttle Cable Only:** On the top side of the mounting bracket, insert the throttle cable stand into the slot at the rear left corner, with the cable stud pointing outwards. Install the 1/4"-20 x 3/4" socket head bolts from the bottom up through the throttle cable mounting bracket, with an internal-tooth lock washer and a post washer (beveled edge out) on each one. **Fig. 4**

**Step 3: Kickdown Cable Only:** On the bottom of the throttle cable bracket, insert the kickdown cable stand into the slot in the rear left corner, with the cable stud pointing outwards. Insert the threaded cap into the slot from the top. Install the 1/4"-20 x 1" socket head bolts from the bottom up through the kickdown cable stand and into the threaded cap. **Fig. 5** Make sure you are using the 1" long (thread length, not total overall length) bolts!

# Throttle Plate with Kickdown & Spring Return Kit for 4150 Style Carburetor Installation Instructions

Building American Quality... With A Lifetime Warranty!®

TOLL FREE 1-877-469-7440 • tech@lokar.com • www.lokar.com

### Step 3: Throttle Cable and Kickdown Cable:

On the bottom of the throttle cable bracket, insert the kickdown cable stand into the slot in the rear left corner, with the cable stud pointing outwards. Insert the throttle cable stand into the slot from the top, directly above the kickdown cable stand, with the cable stud pointing outwards. Install the 1/4"-20 x 1" socket head bolts from the bottom up through the kickdown cable stand and into the throttle cable stand. **Fig. 6** Make sure you are using the 1" long (thread length, not total overall length) bolts!

**Step 4:** Place a new carburetor gasket (not included) onto the intake manifold. Then, install the mounting bracket onto the intake manifold with the cable stand(s) and spring assembly on the left. Place a new carburetor gasket (not included) on top of the mounting bracket, and install the carburetor.

**Step 5:** Place the tab bushing onto the 1/4"-28 x 5/8" button head bolt with the larger diameter side facing the head of the bolt. Insert the button head bolt with the tab bushing into the large round hole in the spring tab. Install this assembly into the return spring hole on the carburetor throttle arm, and secure with the 1/4"-28 nylock nut. Make sure the recess in the tab bushing is seated over the lip on the carburetor throttle arm, and that the spring tab will swing freely on the throttle arm. **Fig. 7**

**Step 6:** Install the Throttle and/or Kickdown Cables following the instructions that came with those kits. Adjust the angle of the cable studs if needed.

Once the Throttle and/or Kickdown Cables have been installed and adjusted, mark the position of the cable studs. Remove the 3/8"-16 x 3/4" bolts from each of the cable studs. Apply blue thread locking compound to each bolt, and reassemble. See **Fig. 8** for a completed installation.

**NOTE:** Before starting the engine, check the carburetor and throttle linkage to make sure there is no binding and that the throttle returns all the way to the closed position.

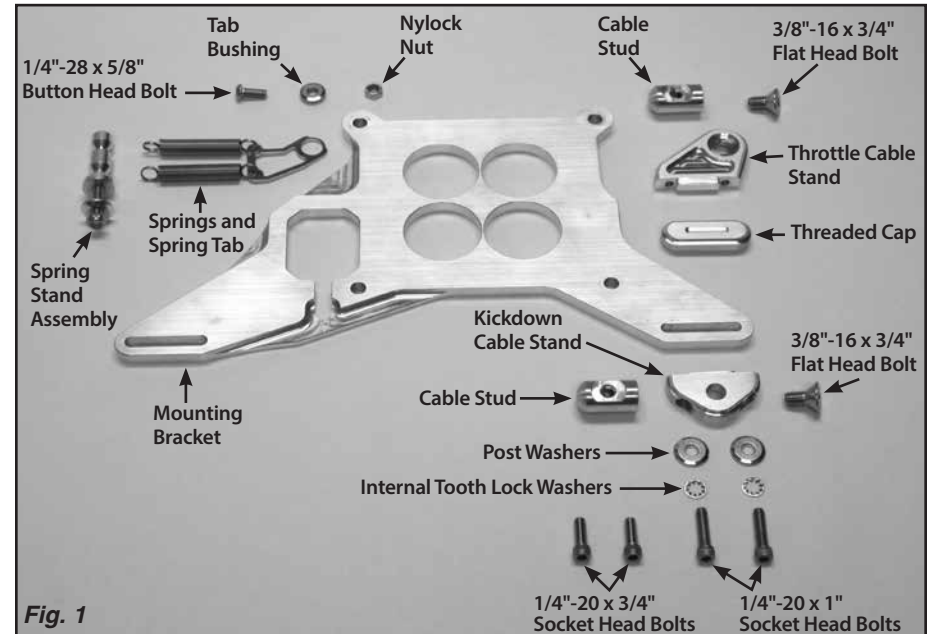


Fig. 1

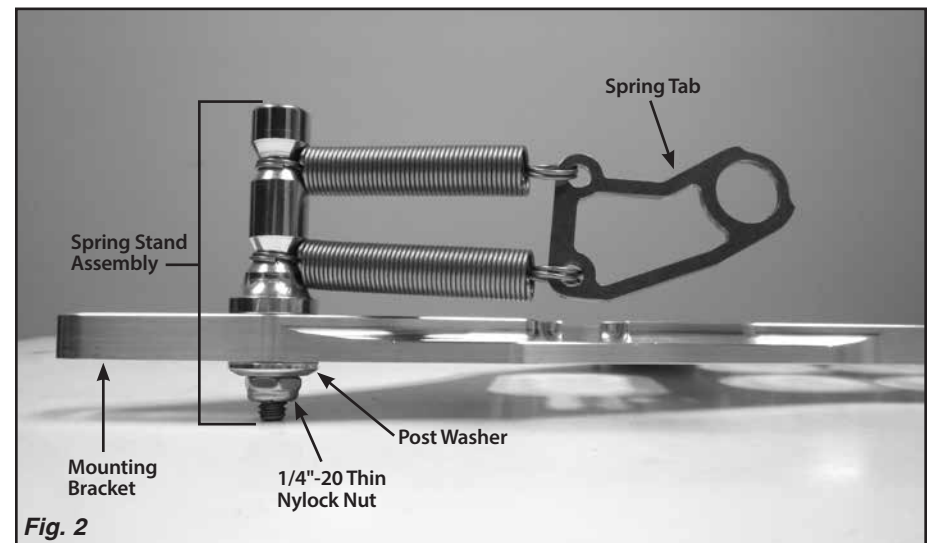


Fig. 2

# Throttle Plate with Kickdown & Spring Return Kit for 4150 Style Carburetor Installation Instructions

